

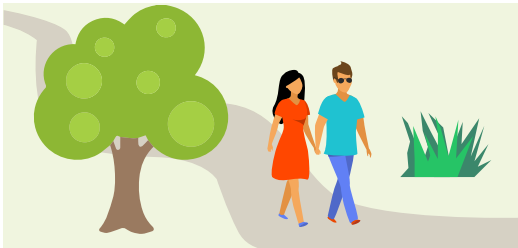
## HOLIDAY ITINERARY #2



# GET ACTIVE



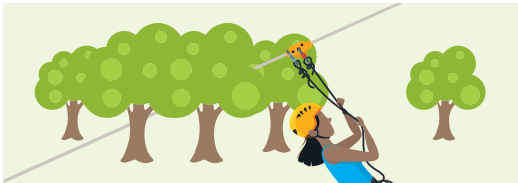
With 60kms of tracks and trails and the world's fastest rollercoaster zipline, get ready to choose your adventure in Sydney's biggest backyard.



Get your steps in, with a morning stroll at **PIMELEA LOOP**. This gentle track connects **LIZARD LOG** and **THE DAIRY** and boasts fields of beautiful bluebells which bloom after the rain. Nearby **CAFÉ SALUTI BY NOVELLA** is open Tuesday to Sunday for those in need of coffee and sustenance to help start the day.



Want some stunning views of the Sydney skyline? Make sure to detour along **MOONRISE LOOP** and ascend to the top of **MOONRISE LOOKOUT** for just that.



Then head to **TREETOP CRAZY RIDER**, a short 15-minute drive away, for an exhilarating ride on the world's fastest rollercoaster zipline, before settling down for lunch at Italian eatery **AMORETTI'S**.



Ready for a wild afternoon? Rock out on the jump and pump tracks at **WYLDE MOUNTAIN BIKE TRAIL**, or head straight for the Black Course if you're an experienced rider – just remember to bring your own bike. For bushwalk lovers there's the 3km **SPOTTED GUMS LOOP** at award-winning **PLOUGH AND HARROW PARK**; and nearby is **SYDNEY INTERNATIONAL SHOOTING CENTRE** if that's your thing.

stay & play

in Sydney's  
biggest backyard



Western Sydney Parklands



**BUNGARRIBEE PARK**  
**SYDNEY ZOO**  
**SYDNEY MOTORSPORT PARK**  
**SKYLINE DRIVE-IN**  
**RAGING WATERS SYDNEY**

**SYDNEY DRAGWAY**

**CALMSLEY HILL CITY FARM**

**WYLDE MTB TRAIL**

**TREETOPS**

**Stay & play**

in Sydney's  
**biggest backyard**



Western Sydney Parklands



↓ CAMPBELLTOWN